

Backpack

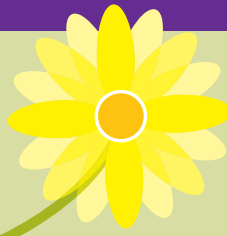


Garden Tours

Explore (and learn about!)
the Arboretum and Gardens
through a school group tour



School Group Visits—*Explore on your own!*



Group Visits to Klehm Arboretum & Botanic Garden are available to school groups to explore the arboretum and gardens without a guide!

Materials are available to help elementary students guide their own learning in the arboretum. Garden Adventure Packs are small backpacks issued to each group upon its arrival and collected when the group departs. One Garden Adventure Pack is issued for every 10 students and their accompanying chaperone.

- Group Visits may be scheduled Tuesday through Friday.
- Group Visits must be scheduled at least two weeks in advance of visit.
- Maximum group size: 50
- Groups must include one chaperone per every eight children.

Students: \$5

Adult Chaperones (one for every eight students): Free

Grades K to 2 Garden Adventure Pack Tours

Water's Edge Walk to Klehm's pond and observe what lives beneath, above and along the water's edge. Discover the fish that live here, the lily pads that grow up from the bottom, and the rocks, dirt, and plants that are necessary for healthy pond life.

Senses Alive! Explore Klehm's Fountain Garden. Observe the plants as they change during the seasons, smell the flowers in bloom, touch stems and leaves and notice their differences, and listen to the creatures that live here.

Cones Galore Discover the different barks, cones, and needles in Klehm's fir grove. Sit in the grove and learn how to identify a fir tree and talk about the animals that nest there.

Grades 3 to 5 Garden Adventure Pack Tours

Super Sleuth Take a hike along the East Loop and learn the history of Klehm Arboretum. Learn to identify and find a Pin Oak by its leaves, a Beech by its bark, and a Smoke Tree by its fuzz. Also explore the science behind seasonal changes in the Arboretum.

Dinosaurs and Groves Explore the Prehistoric Garden where trees and plants from prehistoric eras grow. Learn about the Ginkgo and how dinosaurs might have used them. Then take a walk through the pine groves at Klehm and identify how and why modern-day creatures live in the Arboretum.

Pond and Grass Study Study the vegetation of Klehm's pond. Learn how the pond life lives off its environment and how to provide safe water for all living things. Then walk to the Grass Triangle and learn to identify the species that are native to Northern Illinois.



School Group Registration Form

Complete this form and fax or mail to Klehm Arboretum: Fax 815-965-5914
Mail: Klehm Arboretum & Botanic Garden, Attn: SCHOOL VISITS, 2715 S. Main St., Rockford, IL 61102
Phone: 815-965-8146 Website: www.klehm.org

School Name _____ Teacher/Contact Name _____

School Address _____

City _____ State _____ Zip _____

School Telephone _____ Email Address _____

Number of Students (Limit 50): _____ **Grade Level:** _____ **Number of Adult Chaperones:** _____

Select One Group Visit:

- Water's Edge**
(grades K–2)
- Senses Alive!**
(grades K–2)
- Cones Galore**
(grades K–2)
- Super Sleuth**
(grades 3–5)
- Dinosaurs and Groves**
(grades 3–5)
- Pond and Grass Study**
(grades 3–5)
- General Self-guided Tour**
(grades 6–12)

Select a Preferred Date:

Indicate your preferred dates and times, with “1” being your first choice. We recommend you choose more than one date, in case your first choice is not available.

1. _____ 4. _____

2. _____ 5. _____

3. _____ 6. _____

Fees: A \$50 non-refundable deposit is required.

This deposit will be deducted from your admission price on the day of your visit. It is non-refundable should you cancel your visit.

Students: \$5 each | Adult Chaperones (one for every eight students): Free

Please make checks payable to Klehm Arboretum & Botanic Garden. You may also pay by Visa or Mastercard: Visa Mastercard Discover

Cardholder's Name _____

Card Number _____ Exp. Date _____

Scheduling a Visit

Please fill out the registration form and include the \$50 non-refundable deposit. This deposit will be applied to your admission cost on the day of your visit. It is non-refundable in the event of a cancellation. If you are able to reschedule your tour (space permitting) your deposit will be applied to the date of your rescheduled tour.

Groups may not exceed 50 students. If your group is larger than 50, you must select enough dates that you do not exceed the 50-student maximum.

Tours are limited and scheduled on a first-come, first-served basis. April–May and September–October are the Arboretum's busiest months of the year, but the Arboretum is open year-round for you to visit.

Tours are scheduled for specific areas of the Arboretum and take about 1-1/2 hours.

All tours take place rain or shine. If you choose to cancel your tour, your deposit is non-refundable. If you are able to reschedule, your deposit will be applied to the date of your rescheduled visit.

Picnicking is allowed within the Arboretum at the picnic tables near the Fountain Garden. There is no food service on site, but groups may bring their lunches and they can be refrigerated at the Visitors Center during your tour.

If you would like multiple dates and times, please make copies of this form and complete separately. You only need to include one \$50 deposit—it will apply to the last day.

Your group is welcome to remain in the Arboretum after your tour. You may use this time to eat lunch, and visit other parts of the Arboretum not included in your tour, such as the Demonstration Gardens, Children's Garden or Plant-a-Row Garden.

Please keep a copy of your completed registration form for your records.



Klehm Arboretum & Botanic Garden
2715 S. Main St.
Rockford, IL 61102



Mailing area

Backpack Garden Tours



Klehm Arboretum & Botanic Garden

The mission of the Klehm Arboretum & Botanic Garden:

To maintain a living museum for the enjoyment, education, and inspiration of all people

Klehm Arboretum & Botanic Garden is a partnership with the Winnebago County Forest Preserve.



Connect with us on Facebook and Twitter. Learn about upcoming events, news, or take a look at what's blossoming in our garden. Share your experiences at Klehm through pictures or comments.

